

Product information

Low Hazard commercial seating fabric, Advantage, offers a combination of enduring aesthetic appeal and high performance durability which means it will look good and last for years. Advantage is a plain weave fabric in a rich assortment of colourways in both plains and mixes.

Contact	
UK Head Office:	+44 (0)1924 490491
Germany:	+49 7031 60 84 30
Scandinavia:	+45 32 55 20 01
France/Benelux:	+32 56 227 266
USA:	+1 317 484 0305
China:	+ 86 (0) 21 6133 1812

www.camirafabrics.com



Technical information

UK

Composition

60% Polypropylene, 30% Wool, 10% Viscose

Width

130cm minimum

Weight

385g/m² ±5% (500g/lin.m ±5%)

Abrasion Resistance

5 year guarantee / 90,000 Martindale cycles (full details available)

Flammability

BS EN 1021 - 1:2014 (cigarette)
BS EN 1021 - 2:2014 (match)
BS 7176:2007 Low Hazard

Note: Flammability performance is dependent on foam used.

Light Fastness

5 (ISO 105 - B02:2014)

Fastness to Rubbing

Wet: 3/4, Dry: 4 (ISO 105 - X12:2002)

Cleaning

Vacuum regularly. Wipe clean with a damp cloth or shampoo using proprietary upholstery shampoo.

Please note that seam performance is dependent on seam construction and needle and thread type. We recommend that appropriate sewing advice be taken.

Note: Batch to batch variations in shade may occur within commercial tolerances. We reserve the right to alter technical specifications without notice. The Unregistered Design Rights and the Copyright in all designs are the exclusive property of Camira Fabrics Limited.

D

Zusammensetzung

60% Polypropylen, 30% Wolle, 10% Viskose

Breite

130cm nutzbare Breite

Gewicht

385g/m² ±5% (500g/lfd.M ±5%)

Scheuerfestigkeit

5 Jahre Garantie / 90,000 Martindale Scheuertouren (Details auf Anfrage)

Feuersicherung

BS EN 1021 - 1:2014 (Zigarettentest)
BS EN 1021 - 2:2014 (Streichholztest)
BS 7176:2007 Low Hazard

Bemerkung: Schwerentflammbarkeit hängt von verwendetem Schaum ab.

Lichtechtheit

5 (ISO 105 - B02:2014)

Reibecktheit

Nass: 3/4, Trocken: 4 (ISO 105 - X12:2002)

Reinigung

Regelmässig staubsaugen. Dazu mit einem feuchten Tuch abwischen, oder mit einem speziellen Polsterschaum behandeln.

Eine optimale Nahtausreissfestigkeit hängt von der Nahtfahne, der verwendeten Nadel und dem Näh-Garn ab. Wir empfehlen daher Nähversuche durchzuführen.

Wichtig: Handelsübliche Farbabweichungen können auftreten und berechtigen nicht zur Reklamation. Wir behalten uns die Änderung technischer Spezifikationen vor. Die registrierten und nicht registrierten Urheberrechte der Dessinierungen sind ausschliessliches Eigentum der Camira Fabrics Limited.

F

Composition

60% Polypropylène, 30% Laine, 10% Viscose

Largeur

130cm minimum

Poids

385g/m² ±5% (500g/m.l ±5%)

Résistance à l'abrasion

Garantie de 5 ans / 90,000 Martindale tours (renseignements complémentaires disponibles)

Flammabilité

BS EN 1021 - 1:2014 (cigarette)
BS EN 1021 - 2:2014 (allumette)
BS 7176:2007 Low Hazard

Notez: Réaction au feu dépend de la mousse utilisée.

Solidité à la lumière

5 (ISO 105 - B02:2014)

Solidité au Frottement

Mouillé: 3/4, Sec: 4 (ISO 105 - X12:2002)

Nettoyage

Aspirer régulièrement. Essuyer avec une étoffe humide ou nettoyer à l'aide d'un produit approprié pour tissus d'ameublement.

Veuillez noter que la performance du joint dépend de sa construction ainsi que de l'aiguille et du type de fil utilisés.

Remarque: une variation de couleurs peut provenir (commerciallement tolérable). Nous réservons le droit de changer les spécifications techniques sans préavis. Les Droits de Conception non-enregistrés et les droits d'auteur de tous les motifs sont la propriété exclusive de Camira Fabrics Limited.

ES

Composición

60% Polipropileno, 30% Lana, 10% Viscosa

Ancho

130cm mínimo

Peso

385g/m² ±5% (500g/lin.m ±5%)

Resistencia a la abrasión

Garantía de uso 5 años / 90,000 Martindale ciclos (más información disponible bajo consulta)

Inflamabilidad

BS EN 1021 - 1:2014 (cigarrillo)
BS EN 1021 - 2:2014 (cerilla)
BS 7176:2007 Low Hazard

Condiciones ignífugas dependientes del tipo de foam utilizado.

Solidez a la luz

5 (ISO 105 - B02:2014)

Solidez al rozamiento

Húmedo: 3/4, Seco: 4 (ISO 105 - X12:2002)

Limpieza

Cada tintada puede tener pequeñas variaciones en el tono dentro de las tolerancias comerciales aceptadas.

Tenga en cuenta que el rendimiento de la costura depende de la construcción de la costura, además de la aguja y del tipo de rosca. Le recomendamos que se aconsejen para coser la costura.

Nota: las variaciones de lote a lote en la sombra se puede producir dentro de tolerancias comerciales. Nos reservamos el derecho a efectuar modificaciones técnicas sin previo aviso. Los derechos sobre los diseños no registrados y los derechos de autor en todos los diseños son propiedad exclusiva de Camira Fabrics Limited.

camira

style with substance

www.camirafabrics.com

Advantage



Task seating



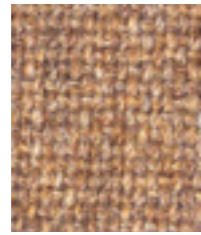
Cigarette & Match



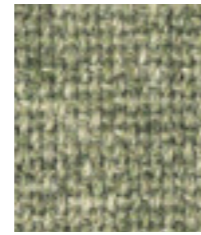
Year guarantee



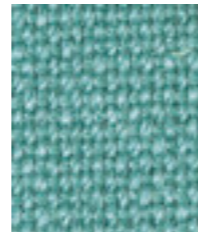
Cinnamon
AD111



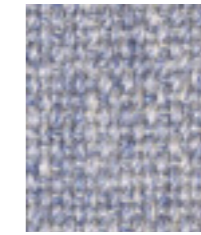
Sandvale
AD016



Leaf
AD030



Kingfisher
AD122



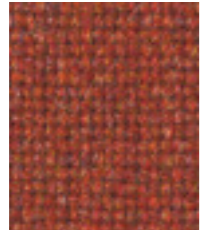
Sea Blue
AD017



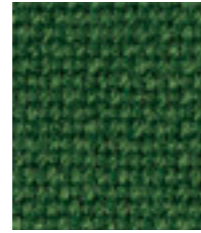
Granite
AD009



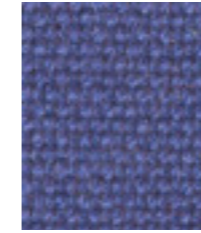
Red
AD014



Tawny
AD098



Shamrock
AD121



Adriatic
AD001



Trent
AD214



Cranberry
AD005



Oasis
AD117



Turquoise
AD027



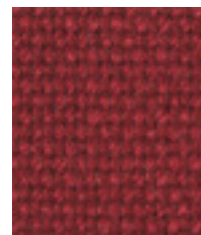
Hobbit
AD213



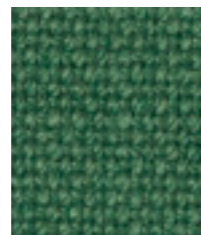
Pewter
AD072



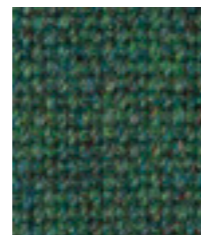
Mineral
AD010



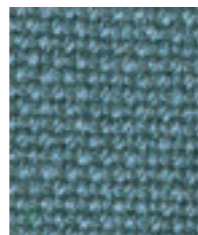
Wine
AD020



Aqua
AD002



Persian
AD101



Riviera
AD123



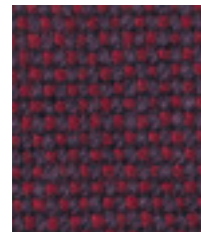
Largo
AD112



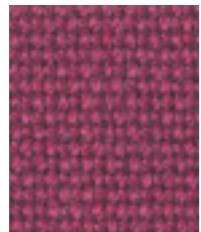
Purple
AD118



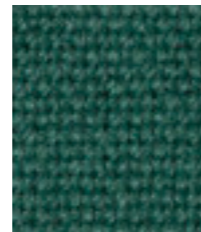
Graphite
AD066



Damson
AD093



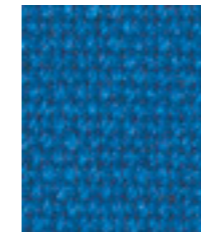
Raspberry
AD127



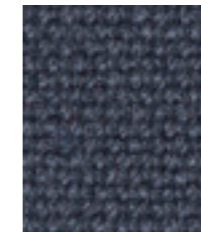
Teal
AD120



Delta Blue
AD026



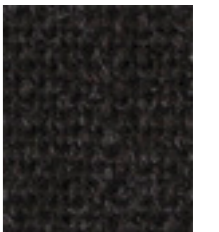
Clipper
AD126



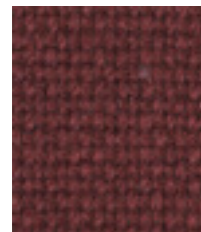
Fjord
AD125



Beetroot
AD116



Charcoal
AD028



Fox
AD119



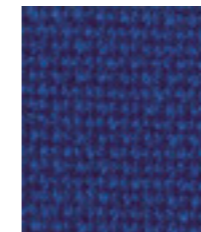
Grape
AD029



Aztec
AD113



Trident
AD124



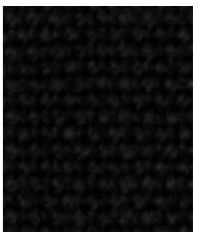
Cobalt
AD004



Nightshade
AD011



Peat
AD131



Black
AD055