

Product information

Hopsack upholstery fabric Chateau, comprises cross-colours and plain shades which work together to create a contemporary look for task chairs. Designed as a contract grade fabric for Europe it comes with a raft of inherent benefits; It's easy to clean, achieves euro flammability, it is extremely durable and the zesty colour palette will maintain its vibrancy after time.

Technical information

UK

Composition

100% Flame Retardant Polypropylene

Width

140cm minimum

Weight

250g/m² ±5% (350g/lin.m ±5%)

Abrasion Resistance

5 year guarantee (full details available)
Grade A tested in accordance with EN 14465:2003

Flammability

BS EN 1021 - 1:2014 (cigarette)
BS EN 1021 - 2:2014 (match)
BS 7176:2007 Low Hazard
BS 7176:2007 Medium Hazard
DIN 4102 B1
UNI 8546 & UNI 9174 Classe 1
Note: Flammability performance is dependent on foam used.

Light Fastness

6 (ISO 105 - B02:2014)

Fastness to Rubbing

Wet: 4, Dry: 4 (ISO 105 - X12:2002)

Cleaning

Vacuum regularly. Wipe clean with a damp cloth or shampoo using proprietary upholstery shampoo.

Please note that seam performance is dependent on seam construction and needle and thread type. We recommend that appropriate sewing advice be taken.

Note: Batch to batch variations in shade may occur within commercial tolerances. We reserve the right to alter technical specifications without notice. The Unregistered Design Rights and the Copyright in all designs are the exclusive property of Camira Fabrics Limited.

D

Zusammensetzung

100% schwerentflammbare Polypropylene

Breite

140cm nutzbare Breite

Gewicht

250g/m² ±5% (350g/lfd.M ±5%)

Scheuerfestigkeit

5 Jahre Garantie (Details auf Anfrage)
Grad A getestet nach Norm EN 14465:2003

Feuersicherung

BS EN 1021 - 1:2014 (Zigarettentest)
BS EN 1021 - 2:2014 (Streichholztest)
BS 7176:2007 Low Hazard
BS 7176:2007 Medium Hazard
DIN 4102 B1
UNI 8546 & UNI 9174 Classe 1
Bemerkung: Schwerentflammbarkeit hängt von verwendetem Schaum ab.

Lichtechtheit

6 (ISO 105 - B02:2014)

Reibechtheit

Nass: 4, Trocken: 4 (ISO 105 - X12:2002)

Reinigung

Regelmässig staubsaugen. Dazu mit einem feuchten Tuch abwischen, oder mit einem speziellen Polsterschaum behandeln.

Eine optimale Nahtausreissfestigkeit hängt von der Nahtfahne, der verwendeten Nadel und dem Näh-Garn ab. Wir empfehlen daher Nähversuche durchzuführen.

Wichtig: Handelsübliche Farbabweichungen können auftreten und berechtigen nicht zur Reklamation. Wir behalten uns die Änderung technischer Spezifikationen vor. Die registrierten und nicht registrierten Urheberrechte der Dessinierungen sind ausschliessliches Eigentum der Camira Fabrics Limited.

Contact

UK Head Office: +44 (0)1924 490491

Germany: +49 7031 60 84 30

Scandinavia: +45 32 55 20 01

France/Benelux: +32 56 227 266

USA: +1 616 288 0655

China: + 86 (0) 21 6133 1812

www.camirafabrics.com



F

Composition

100% Polypropylène retardateur de flamme

Largeur

140cm minimum

Poids

250g/m² ±5% (350g/m.l ±5%)

Résistance à l'abrasion

Garantie de 5 ans (renseignements complémentaires disponibles)
Grade A testé selon la norme EN 14465:2003

Flammabilité

BS EN 1021 - 1:2014 (cigarette)
BS EN 1021 - 2:2014 (allumette)
BS 7176:2007 Low Hazard
BS 7176:2007 Medium Hazard
DIN 4102 B1
UNI 8546 & UNI 9174 Classe 1
Notez: Réaction au feu dépend de la mousse utilisée.

Solidité à la lumière

6 (ISO 105 - B02:2014)

Solidité au Frottement

Mouillé: 4, Sec: 4 (ISO 105 - X12:2002)

Nettoyage

Aspirer régulièrement. Essuyer avec une étoffe humide ou nettoyer à l'aide d'un produit approprié pour tissus d'ameublement.

Veillez noter que la performance du joint dépend de sa construction ainsi que de l'aiguille et du type de fil utilisés.

Remarque: une variation de couleurs peut provenir (commerciallement tolérable). Nous réservons le droit de changer les spécifications techniques sans préavis. Les Droits de Conception non-enregistrés et les droits d'auteur de tous les motifs sont la propriété exclusives de Camira Fabrics Limited.

ES

Composición

100% Polipropileno resistente al fuego

Áncho

140cm mínimo

Peso

250g/m² ±5% (350g/lin.m ±5%)

Resistencia a la abrasión

Garantía de uso 5 años (más información disponible bajo consulta)
Clasificación A según la norma EN 14465:2003

Inflamabilidad

BS EN 1021 - 1:2014 (cigarillo)
BS EN 1021 - 2:2014(cerilla)
BS 7176:2007 Low Hazard
BS 7176:2007 Medium Hazard
DIN 4102 B1
UNI 8546 & UNI 9174 Classe 1
Condiciones ignifugas dependientes del tipo de foam utilizado.

Solidez a la luz

6 (ISO 105 - B02:2014)

Solidez al rozamiento

Húmedo: 4, Seco: 4 (ISO 105 - X12:2002)

Limpieza

Limpiar con aspiradora frecuentemente. Bien lavar con un paño húmedo o con un champú apropiado para tapicería.

Tenga en cuenta que el rendimiento de la costura depende de la construcción de la costura, además de la aguja y del tipo de rosca. Le recomendamos que se aconsejen para coser la costura.

Nota: las variaciones de lote a lote en la sombra se puede producir dentro de tolerancias comerciales. Nos reservamos el derecho a efectuar modificaciones técnicas sin previo aviso. Los derechos sobre los diseños no registrados y los derechos de autor en todos los diseños son propiedad exclusiva de Camira Fabrics Limited.

camira

style with substance

www.camirafabrics.com

Château



Task seating



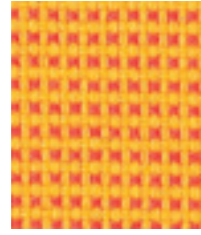
Cigarette & Match



Medium Hazard
B1



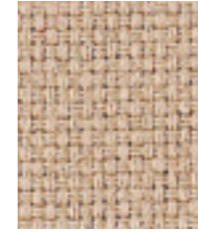
Year guarantee



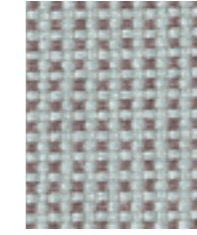
Chantilly
CSP28



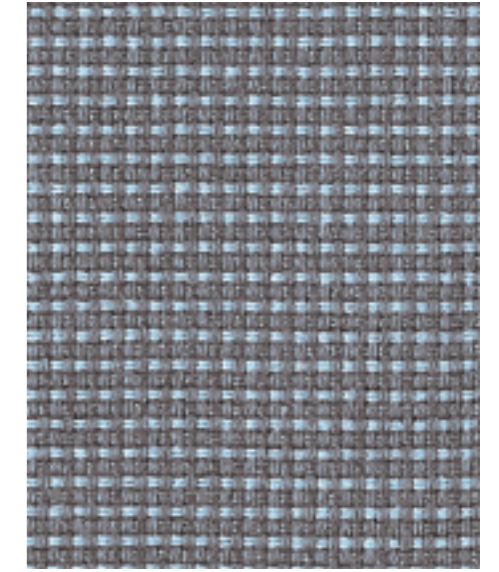
Rideau
CSP33



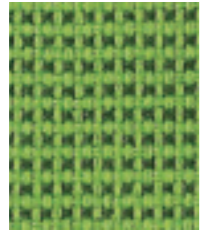
Mombet
CSP23



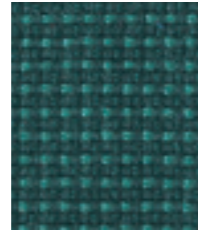
Losse
CSP36



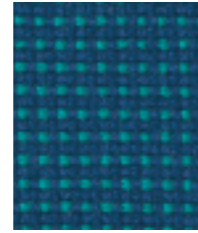
Perigord
CSP38



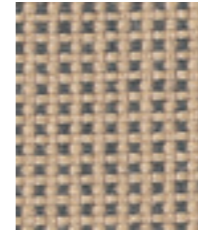
Tarascon
CSP29



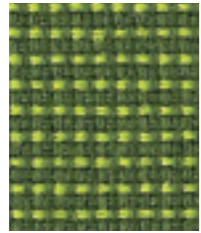
Motte
CSP14



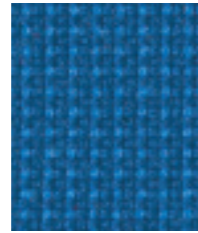
Biron
CSP15



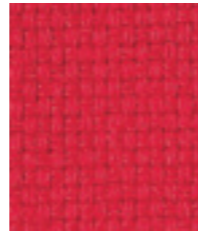
Pomerol
CSP01



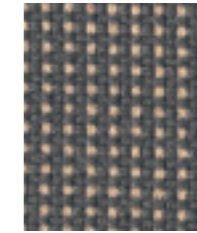
Vincennes
CSP31



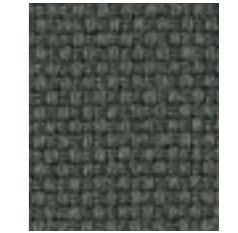
Chinon
CSP09



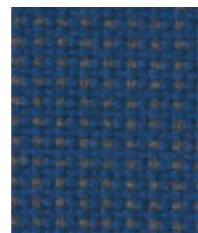
Martet
CSP42



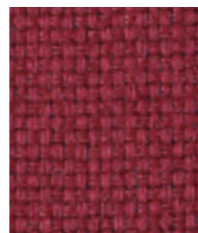
Medoc
CSP02



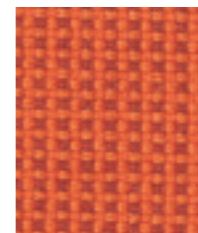
Belcaire
CSP43



Touvet
CSP12



Divonne
CSP47



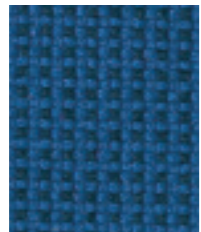
Brissac
CSP03



Palice
CSP19



Hazeville
CSP20



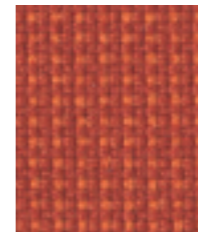
Bonpas
CSP11



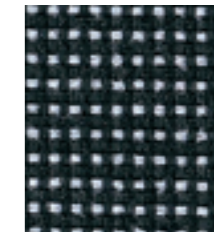
Bellay
CSP51



Dollard
CSP07



Noizay
CSP04



Trianons
CSP39



Beauvois
CSP48